

# **A1 Consolidated Gold Limited**

## **PRESENTATION**

### **Brisbane RIU 2012**



**A1 Consolidated Gold Ltd**

[www.a1consolidated.com.au](http://www.a1consolidated.com.au)  
[info@a1consolidated.com.au](mailto:info@a1consolidated.com.au)  
P: (08) 9389 2111  
F: (08) 9389 2199



# Disclaimer

This presentation has been prepared by A1 Consolidated Gold Limited ("Company"). The material contained in this presentation has been prepared for information purposes only, and is not an offer, invitation or recommendation for subscription or purchase of securities in the Company.

While the information contained in this Presentation has been prepared in good faith, neither the Company or any of its shareholders, directors, officers, agents, employees or advisers give any representations or warranties (express or limited) as to the accuracy, reliability or completeness of the information in this Presentation, or of any other written or oral information made or to be made available to any interested party or its advisers (all such information being referred to as 'Information') and liability therefore is expressly disclaimed. Accordingly, to the full extent permitted by law, neither the Company nor any of its shareholders, directors, officers, agents, employees or advisers take any responsibility for, or will accept any liability whether direct or indirect, express or limited, contractual, tortious, statutory or otherwise, in respect of, the accuracy or completeness of the Information or for any of the opinions contained in this Presentation or for any errors, omissions or misstatements or for any loss, howsoever arising, from the use of this Presentation.

Neither the issue of this Presentation nor any part of its contents is to be taken as any form with any inaccuracies in, or omissions from, this Presentation which may become apparent. The Company reserves its right to terminate any

discussions or negotiations with any person. In no circumstances will the Company be responsible for any costs, losses or expenses incurred in connection with any of commitment on the part of the Company to proceed appraisal or investigation of the Company. In furnishing this Presentation, the Company does not undertake or agree to any obligation to provide the recipient with access to any additional information or to update this Presentation or to correct any errors.

This Presentation should not be considered as the giving of investment advice by the Company or any of its shareholders, directors, officers, agents, employees or advisers. In particular, any estimates or projections or opinions contained in this Presentation necessarily involve significant elements of subjective judgment, analysis and assumptions and each recipient should satisfy itself in relations to such matters.

## Competent Persons Statement

The information in this presentation that relates to Exploration Results, Mineral Resources or Ore Resources is based on information compiled by Morrie Goodz who is a Fellow of The Australasian Institute of Mining and Metallurgy. Mr Goodz is a Director of A1 Consolidated Gold Limited, and has sufficient experience which is relevant to the style of mineralisation and type of deposit under consideration and to qualify as a Competent Person as defined in the 2004 Edition of the JORC Code. Mr Goodz has given his consent to the inclusion in the report of the matters based on this information in the form and context in which it appears.

# Overview



A1 Consolidated Gold Ltd

3

- **Advanced project on granted mining lease**
  - Fully operational mine site including underground development & infrastructure
  - Decline being developed (~100m per month)
  - Toll treatment agreement with Maldon Resources Pty Ltd (a related entity of Octagonal Resources Limited) – 50,000tpa (3 years)
- **Maiden JORC Inferred Mineral Resource of 133,000 oz Gold July 2012 <sup>(1)</sup>**
  - 750,000 t @ 5.5 g/t Au
  - 5 year mine life at 150,000 tpa
  - Resource growth is expected
- **Early Mining**
  - Path of decline designed to pass through gold bearing host structure allowing for mining in the development phase
  - Treatment of 5500 tonne bulk sample demonstrates that a gravity circuit is required and is due to be completed Quarter 1, 2013
- **Planned Production Growth**
  - Access to the 1400 Level will provide opportunity for greater tonnage treatment and production
  - The mining design is for a bulk mineable ore body

<sup>1)</sup>Mineral Resources which are not Ore Reserves do not have demonstrated economic viability. The estimate of Mineral Resources may be materially affected by environmental, permitting, legal, title, taxation, socio-political, marketing, operational cost, metal price, mining control, dilution or other relevant issues. There has been insufficient exploration at this date to define these Inferred Mineral Resources as an Indicated or Measured Mineral Resource, as there is insufficient close-spaced drill hole data to adequately define grade and geological continuity for this structurally complex deposit. It is uncertain if further exploration will result in upgrading the Inferred Mineral Resource to an Indicated or Measured Mineral Resource category or to Ore Reserves.

# Company Overview



A1 Consolidated Gold Ltd

4

## Capital Structure

Listed	21 June 2012
ASX Code	AYC
Share price (29 <sup>th</sup> October 2012)	\$0.27
Shares on issue	138.2m
Options (unlisted)	26.67m
Market cap (@ \$0.27 per share)	\$37.3m
Cash (30 <sup>th</sup> Sept 2012)	\$5.9m
No debt and no hedging	

## Major Shareholders

Gaffney's Creek Gold Mine	24.1%
Heron Resources	18.1%
Board and Management	13.8%
Top 20	77%

## Major Projects

A1 Gold Mine (MIN5294)	100%
------------------------	------

## Other Projects

Ten Mile Gold Field (EL5109)	100%
------------------------------	------

Star of the West (MIN4636)	100%
----------------------------	------





# Experienced Board and Management Team

## Ashok Parekh

### Non-Executive Chairman

Chartered accountant who has operated an Accounting Practice for 25 years. Awarded the Centenary Medal in 2003 and recently awarded the Meritorious Service Award by the Institute of Chartered Accountants. Executive Chairman of MacPhersons Reward Gold Ltd (ASX: MRP).



## Dennis Clark

### Managing Director

38 years' experience in underground mining, with extensive knowledge of mine development. Mr. Clark has been the driving force behind the re-development of the A1 Gold Mine and is intimately familiar with the mine workings and geology.



## Darren Russell-Croucher

### Director of Mining

Over 20 years' experience in the exploration, construction and development of gold projects. He has been involved in the management teams of gold projects in Victoria and Western Australia, taking the projects from the construction phase through to production.



## Morrie Goodz

### Non-Executive Director



## Jeff Williams

### Non-Executive Director



## Glenn Wardle

### Non-Executive Director



## Emma Walczak

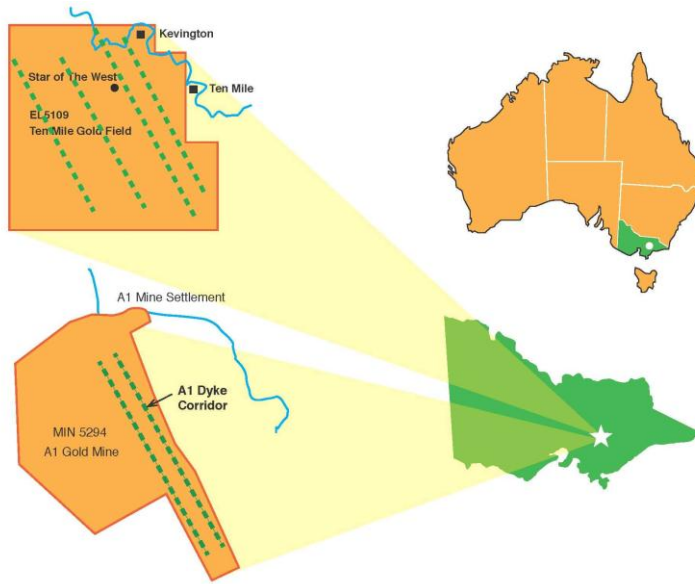
### Company Secretary

# Project Location



A1 Consolidated Gold Ltd

6



3 Projects located approx. 120km NE of Melbourne in the Woods Point–Walhalla Dyke corridor

Company's Projects consist of:

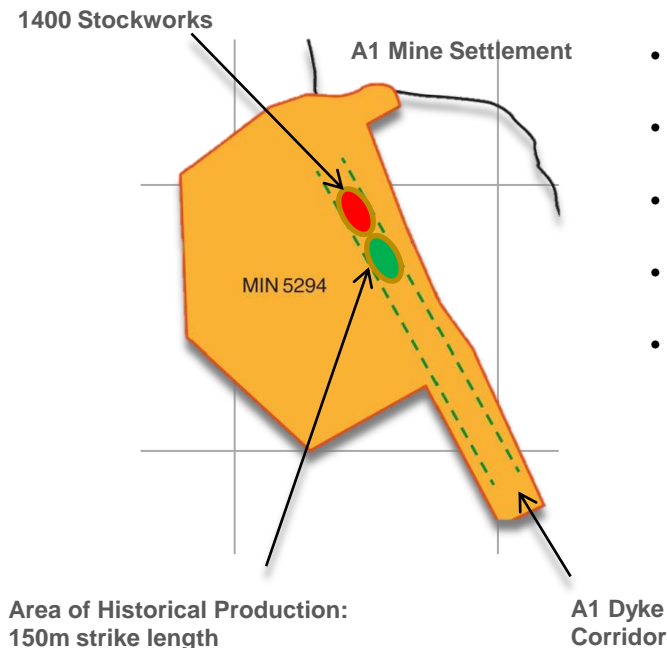
- A1 Gold Mine ( MIN5294);
- Ten Mile Goldfield (EL5109); and
- Star of the West (MIN4636)

Focus is the A1 Gold Mine

- Historical gold production of circa 620,000oz at an average grade of 32 g/t



# A1 Gold Mine (MIN5294)



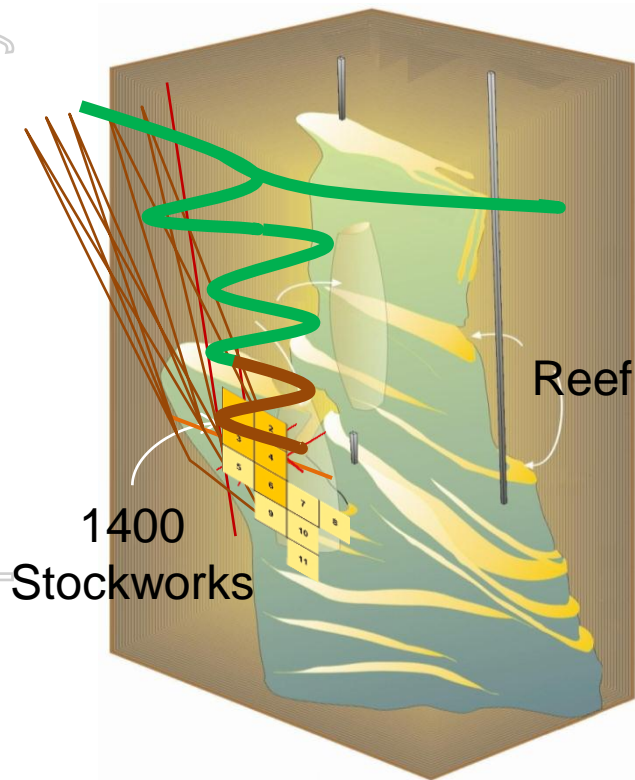
- Gold mineralisation associated with intrusive diorite dyke
- A1 Dyke outcrops for **>1000m** in strike length
- Tenement covers entire known A1 Dyke corridor
- Exploration to date has tested only **150m** of strike length
- Equipped for mining with operational mine site - extensive underground mine development and site infrastructure in place

# A1 Gold Mine Project



A1 Consolidated Gold Ltd

8



- ❖ Potential of the 1400 Stockwork Zone was first recognised in early 1980's
- ❖ This was followed by a radial drilling program in 1989-90
- ❖ Underground drilling program in 2010-11
- ❖ JORC Inferred Mineral Resource <sup>(1)</sup> of 133,000 oz Gold  
750,000 t @ 5.5 g/t Au

<sup>1)</sup>Mineral Resources which are not Ore Reserves do not have demonstrated economic viability. The estimate of Mineral Resources may be materially affected by environmental, permitting, legal, title, taxation, socio-political, marketing, operational cost, metal price, mining control, dilution or other relevant issues. There has been insufficient exploration at this date to define these Inferred Mineral Resources as an Indicated or Measured Mineral Resource, as there is insufficient close-spaced drill hole data to adequately define grade and geological continuity for this structurally complex deposit. It is uncertain if further exploration will result in upgrading the Inferred Mineral Resource to an Indicated or Measured Mineral Resource category or to Ore Reserves.



# Fully Equipped and Operational Underground Mine



A1 Consolidated Gold Ltd

9

## Site Infrastructure

- All required surface site infrastructure in place

## Mining Equipment

- All mining plant & equipment 100% owned
- Fully equipped maintenance facilities

## Workforce

- Small on site team operating in 2 shifts
- Determination to keep costs low

## Agreements

- Fully permitted mine site
- Toll treatment agreement (50,000tpa for 3 years)

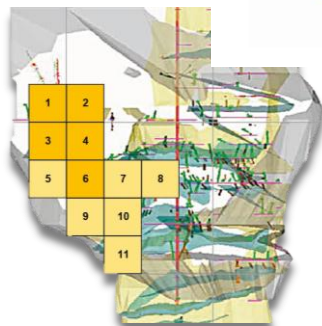
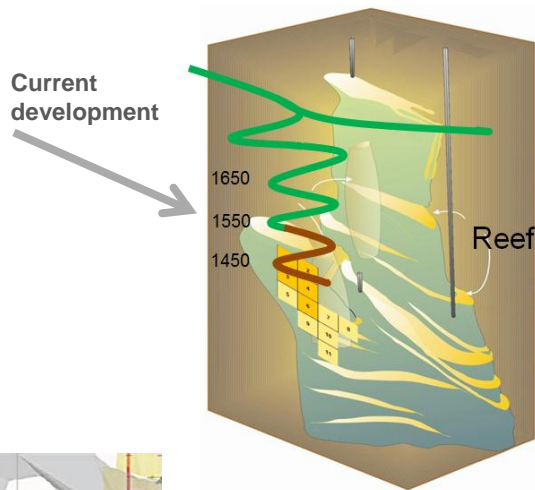


# Mine Development – 1400 Level Stockworks



A1 Consolidated Gold Ltd

10



## Access to 1400 Stockwork Zone:

- Maiden JORC Inferred Mineral Resource of 750,000t @ 5.5 g/t Au<sub>(t)</sub> containing 133,000 oz Gold July 2012
- Decline expected to reach the 1400 Level Stockwork Zone in July 2013
- Current infrastructure can support production rate of circa 150,000 tpa with little CAPEX required
- Current resource allows for a mine life of a minimum 5 years at this production rate

<sup>1)</sup>Mineral Resources which are not Ore Reserves do not have demonstrated economic viability. The estimate of Mineral Resources may be materially affected by environmental, permitting, legal, title, taxation, socio-political, marketing, operational cost, metal price, mining control, dilution or other relevant issues. There has been insufficient exploration at this date to define these Inferred Mineral Resources as an Indicated or Measured Mineral Resource, as there is insufficient close-spaced drill hole data to adequately define grade and geological continuity for this structurally complex deposit. It is uncertain if further exploration will result in upgrading the Inferred Mineral Resource to an Indicated or Measured Mineral Resource category or to Ore Reserves.

Drawings are not to scale and are for illustration purposes only

For personal use only

Grid = 100sqm

GDA94 North

Area of 2012 Drilling Program

GC2 Via Gold Intercept

GC1

GC3

GC4

GC5

GC6

GC7

GC8

GC9

GC10

GC11

GC12

GC13

GC14

GC15

GC16

GC17

GC18

GC19

GC20

GC21

GC22

GC23

GC24

GC25

GC26

GC27

GC28

GC29

GC30

GC31

GC32

GC33

GC34

GC35

GC36

GC37

GC38

GC39

GC40

GC41

GC42

GC43

GC44

GC45

GC46

GC47

GC48

GC49

GC50

GC51

GC52

GC53

GC54

GC55

GC56

GC57

GC58

GC59

GC60

GC61

GC62

GC63

GC64

GC65

GC66

GC67

GC68

GC69

GC70

GC71

GC72

GC73

GC74

GC75

GC76

GC77

GC78

GC79

GC80

GC81

GC82

GC83

GC84

GC85

GC86

GC87

GC88

GC89

GC90

GC91

GC92

GC93

GC94

GC95

GC96

GC97

GC98

GC99

GC100

A1PL-008

91 Sulphide intercept 37m above 10L

A1PL-001

A1PL-009

10m width

Dyke Corridor

South A1 Shaft

A1 Main Shaft

GC2

GC1

GC3

GC4

GC5

GC6

GC7

GC8

GC9

GC10

GC11

GC12

GC13

GC14

GC15

GC16

GC17

GC18

GC19

GC20

GC21

GC22

GC23

GC24

GC25

GC26

GC27

GC28

GC29

GC30

GC31

GC32

GC33

GC34

GC35

GC36

GC37

GC38

GC39

GC40

GC41

GC42

GC43

GC44

GC45

GC46

GC47

GC48

GC49

GC50

GC51

GC52

GC53

GC54

GC55

GC56

GC57

GC58

GC59

GC60

GC61

GC62

GC63

GC64

GC65

GC66

GC67

GC68

GC69

GC70

GC71

GC72

GC73

GC74

GC75

GC76

GC77

GC78

GC79

GC80

GC81

GC82

GC83

GC84

GC85

GC86

GC87

GC88

GC89

GC90

GC91

GC92

GC93

GC94

GC95

GC96

GC97

GC98

GC99

GC100

58489100

5849000

5848900

5848800

5848700

429400

429500

429600

Northern Extension from drilling by A1PL, 2008  
Plan at 10 Level (not to scale)

A1 Consolidated Gold Ltd

- Underground drill platform is ready
- Target area **400m** strike and up to **30m** wide

Copyright © 2012 by A1 Consolidated Gold Ltd. All rights reserved.

# Summary



A1 Consolidated Gold Ltd

12

- **Advanced project on granted mining lease**
  - Fully Operational Mine Site
  - Infrastructure, Plant & Equipment fully owned
- **Maiden JORC Inferred Mineral Resource of 750,000t @ 5.5 g/t Au for 133,000 oz** <sup>(1)</sup>
  - Excellent start – 5 year Mine Life at 150,000 tpa
- **Early Production from Development Stockworks**
  - Potential to be **cash flow neutral** in development phase
- **Production Growth Potential**
  - Access to the 1400 Level to provide access to greater tonnage treatment and production
- **Near mine exploration targets**
  - Multiple near mine drill ready targets
- **Funded to production with \$5.8 million cash, no debt and no hedging**
- **Highly experienced Board and Management with a commitment to keeping costs low**

<sup>1</sup>Mineral Resources which are not Ore Reserves do not have demonstrated economic viability. The estimate of Mineral Resources may be materially affected by environmental, permitting, legal, title, taxation, socio-political, marketing, operational cost, metal price, mining control, dilution or other relevant issues. There has been insufficient exploration at this date to define these Inferred Mineral Resources as an Indicated or Measured Mineral Resource, as there is insufficient close-spaced drill hole data to adequately define grade and geological continuity for this structurally complex deposit. It is uncertain if further exploration will result in upgrading the Inferred Mineral Resource to an Indicated or Measured Mineral Resource category or to Ore Reserves.



**Thankyou**  
**Come and Visit us at**  
**Booth # 77**